

FUTURE PREP

<i>Introduction</i>	
WHAT IS MANUFACTURING? IT'S A WORLD OF OPPORTUNITY	2
<i>Career Interest Assessment</i>	
MANUFACTURING CHOICES	4
<i>Education Options</i>	
START ON YOUR PATHWAY TO SUCCESS	43

CAREER FEATURES

<i>Production</i>	
MANUFACTURING FUN	8
GET ON BOARD WITH YOUR FUTURE	12
<i>Manufacturing Production Process Development</i>	
HAVE YOU HAD YOUR CORN TODAY?	14
<i>Maintenance, Installation & Repair</i>	
THE PROBLEM SOLVERS	20
<i>Quality Assurance</i>	
QUALITY: IT MAKES THE MANUFACTURING WORLD GO 'ROUND	25
<i>Logistics & Inventory Control</i>	
MOVING MILK	31
<i>Health, Safety and Environmental Assurance</i>	
DEERE AND COMPANY: MORE THAN THE TRACTORS ARE GREEN	37

PLANNING GUIDE INSIDE!

A handy pull-out tool to help you draft your career-related high school and postsecondary education plans.

Chief Executive Officer
Jim Dick

President and Publisher
Barbara F. Orwig

Editor in Chief
Mary Pitchford

Art Director
Jerry Kanabel

Graphic Designer
Chris Bundy

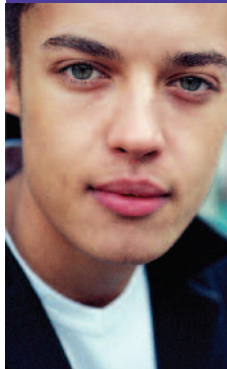
Curriculum Director
Charlotte Davis

Education Consultant
Helen Winter

Regional Directors
Anthony J. Boes
Monte Cass
Ann Craig
Tom Martin

Business Manager
Pat Graham

Circulation Manager
Kellie Antle
Administrative Assistant
Hope Harris



EDITORIAL CONTRIBUTIONS

Pamela S. Bacon, Melissa Barbier, Carol Muse Evans, Gina R. Napoli, Dan Rafter, Joan Rhine, Donna Pitz, Mark Rowh, Patty Williamson, Ph.D.

ADVISORY BOARD

Michael Brustein, Attorney at Law, Washington, DC
Kim Green, Executive Director, NASDCTec, Washington, DC
John A. Heffner, Director, Manpower and Training, Associated General Contractors, Washington, DC
Mimi Lufkin, Executive Director, National Alliance for Partnerships in Equity, Cochranville, PA
Dr. Joyce Winterton, Educational Consultant, Reston, VA

Award-winning, research-based *American Careers* classroom programs integrate career and academic standards in content and learning activities.

Links to Internet sites are provided for your convenience and do not constitute endorsement.

Copyright © 2006 by
 ●■ career communications, inc.
 All rights reserved.

Manufacturing: The New Generation is published by Career Communications, Inc., 6701 W. 64th Street, Overland Park, KS 66202; (913) 362-7788, ccinfo@carcom.com. Material in this issue may not be reproduced in whole or in part in any form or format without permission from the publisher.